

# Power Factor

## Check and improve the energy conversion efficiency in your business.

Power factor measures just how effectively your electrical equipment is converting live current into useful output power, like heat, light or mechanical motion. If it's not up to scratch, it could be costing you money. We can check your current Power Factor and help you make improvements.

### WHAT WILL IMPROVED POWER FACTOR DELIVER?

- Higher and better quality voltage regulation. You can avoid unreliable equipment performance due to lower voltages caused by poor Power Factor.
- Increased capacity to serve actual working power requirements.
- Reduction in operational downtime caused by overloading of electrical assets. Improved Power Factor will release the stress on internal infrastructure.
- Lower transmission and distribution losses in your electrical system.
- Avoidance of increased costs for new installation because of the need to oversize cables, switchboards and other electrical equipment due to poor Power Factor.
- Some electricity network companies charge large power users when their Power Factor falls below 0.95 lagging – and there's a potential extra hit with kVA demand charges. You'll save money with improved Power Factor by lowering your kVA demand charges and/or reactive charges.

### THE DETAILS

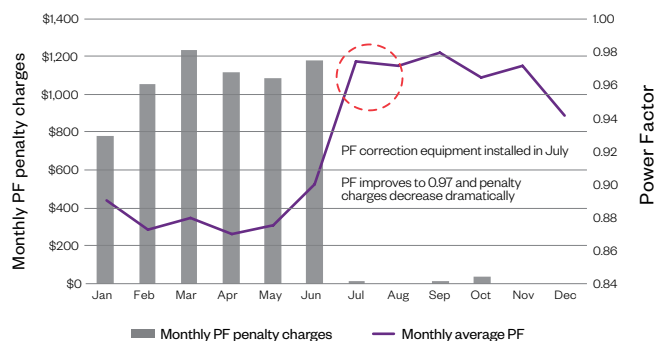
You'll see immediate improvements in performance and cost savings when you optimise your Power Factor.

- If Power Factor is consistently below 0.95 lagging, the most effective solution is to install Power Factor corrective equipment. It uses automatically controlled capacitor banks to improve power quality.
- The corrective equipment is designed and sized to match your site conditions and electrical load profiles.
- We can provide ongoing monitoring of your equipment once it's installed. A monthly fee will cover annual inspections and monthly retrospective data checks.

- We can advise immediately on your current Power Factor level and whether your network charges include a reactive penalty for poor Power Factor and/or a kVA demand based charge.

### SERIOUS COST SAVINGS

The effect on monthly Power Factor penalty charges following installation of correction equipment:



### ALL THE HELP YOU NEED FROM YOUR ACCOUNT MANAGER

Your Account Manager can set the wheels in motion by:

- Advising on your current level of Power Factor.
- Letting you know if your network is charging penalties for poor Power Factor or kVA demand based charges.
- Discussing the process of installing corrective equipment and payment options.

### Deferred payment option

We can also discuss the option of deferring the cost of Power Factor correction equipment through monthly instalments on your electricity invoice. This can be done over 12, 24 or 36 months, with payment in full should your contract be broken during the repayment term.



### WE'RE HERE TO HELP

For more information please contact your Account Manager or our Business team on:

**P:** 0800 271 271

**E:** [business.support@contactenergy.co.nz](mailto:business.support@contactenergy.co.nz)

### We can manage the whole process from start to finish



Inspect



Analyse



Quote



Install



Commission