

Thermal Imaging

Make sure your equipment is operating at its best with no risk of fire or failure.

Serious equipment faults can often be invisible. A visual inspection is a good start, but it's only part of the story. Thermal Imaging is non-invasive and will get to the core of what's going on and flag any safety issues straight away.

WHAT WILL THERMAL IMAGING DELIVER?

The biggest benefit is protecting your business' equipment and peace of mind. It can help:

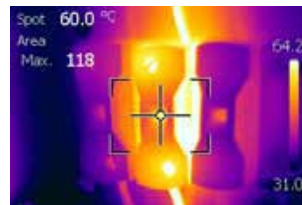
- Reduce the risk of electrical fires.
- Reduce the risk of down time due to equipment failure.
- Reduce potential energy waste with refrigeration systems.
- Earlier identification of risks.
- Input into your risk assessment programme.
- Potentially reduce insurance premiums. Many insurance companies now require businesses to undertake Thermal Imaging as part of their risk management programme.

THE DETAILS

Thermal Imaging is a thorough, low cost way to ensure your equipment is safe and operating at its best. It's a non-invasive, preventative, maintenance activity that will:

- Pinpoint the location of faults so issues can be resolved, before serious problems occur.
- Immediately show if components such as switchboards, fuses and circuit breakers are too hot and dangerous.
- Check for cold air loss in refrigeration systems.
- The best time to do it is when your business is in full operation.

HOT SPOTS AND RISK ASSESSMENT



Thermal Imaging of a fuse holder showing an extreme risk hotspot. It could've resulted in an electrical fire or major plant shut down.

Extreme Risk: Temperature Anomaly: >40°C Corrective measures required immediately.	-100
High Risk: Temperature Anomaly: 20-40°C Corrective measures required ASAP.	-80
Medium Risk: Temperature Anomaly: 11-20°C Corrective measures required as scheduling permits	-60
Low Risk: Temperature Anomaly: 1-10°C Corrective measures required at the next maintenance period.	-40

ALL THE HELP YOU NEED FROM YOUR ACCOUNT MANAGER

Your Account Manager can set the wheels in motion by speaking to our Energy Solutions Team who can project manage the entire process including:

- Arranging an Infrared Thermal Imaging Survey of your onsite electrical systems in accordance with industry codes and compliance standards.
- Sorting out switchboard labelling with a unique labelling and reporting system.
- Setting up a log in account to an online Thermography Risk Management reporting tool.
- Organising free support if you're undertaking corrective measures and/or repairs to the items highlighted in the Infrared Thermal Imaging Survey, for up to 12 months.

Deferred payment option

We can also discuss the option to pay the cost of Thermal Imaging through monthly instalments on your electricity invoice. This can be done over 12, 24 or 36 months, with payment in full should your contract be broken during the repayment term.



WE'RE HERE TO HELP

For more information please contact your Account Manager or our Business team on:

P: 0800 271 271

E: business.support@contactenergy.co.nz

We can manage the whole process from start to finish



Quote



Survey