

Monthly Operating Report

December 2021



Putting our energy where it matters

December overview.

For the month of December 2021

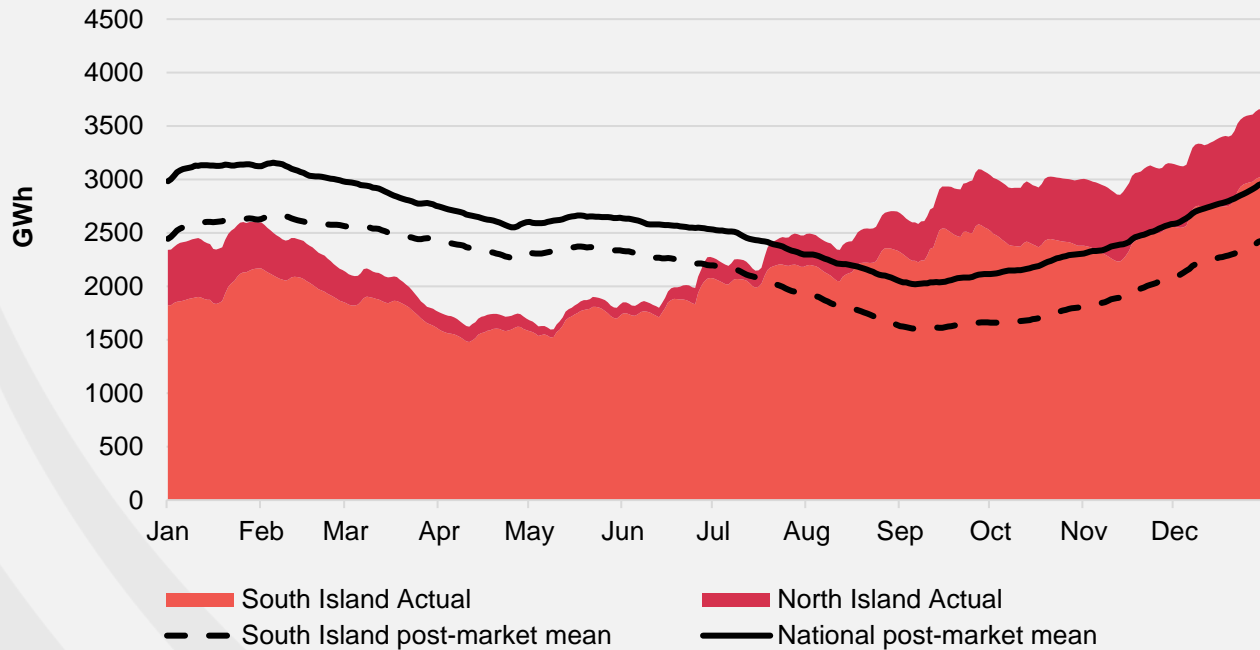
- » The Customer business recorded:
 - Mass market electricity and gas sales of 288GWh (December 2020: 286GWh)
 - Mass market netback of \$106.73/MWh (December 2020: \$98.67/MWh)
- » The Wholesale business recorded:
 - Contracted Wholesale electricity sales, including that sold to the Customer business, totalled 644GWh (December 2020: 582 GWh)
 - Electricity and steam net revenue of \$83.30/MWh (December 2020: \$70.29/MWh)
 - Electricity generated (or acquired) of 684 GWh (December 2020: 617 GWh)
 - The unit generation cost, which includes acquired generation was \$20.03/MWh (December 2020: \$33.29/MWh)
 - Own generation cost in the month of \$18.24/MWh (December 2020 : \$29.43MWh)
- » Otahuhu futures settlement wholesale price for the 2nd quarter of 2022 (ASX):
 - As at 11 Jan 2022: \$180/MWh
 - As at 31 Dec 2021: \$160/MWh
 - As at 30 Nov 2021: \$168/MWh
- » As at 11 Jan 2022, South Island controlled storage was 115% of mean and North Island controlled storage was 131% of mean
 - As at 11 Jan 2022, total Clutha scheme storage (including uncontrolled storage) was 87% of mean
 - Inflows into Contact's Clutha catchment for December 2021 were 94% of mean (November 2021: 87%
October 2021: 98%
September 2021: 154%)
- » As at 1 December 2021, Contact's contracted gas volume (including contracted swaps) for the next 12 months is 15.24PJ*

* As notified by suppliers, actual gas received is dependent on field delivery

Hydro storage and forward prices.

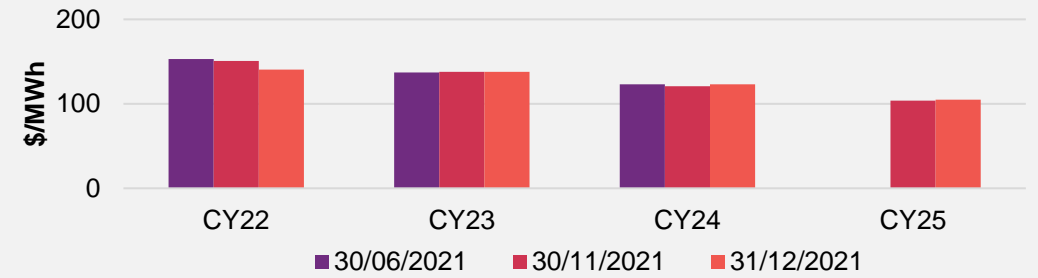
New Zealand controlled hydro storage against mean

12 MONTHS

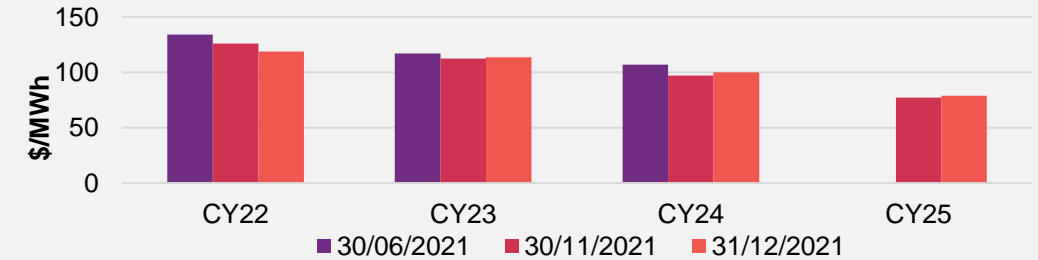


ASX futures settlement

Otahuhu

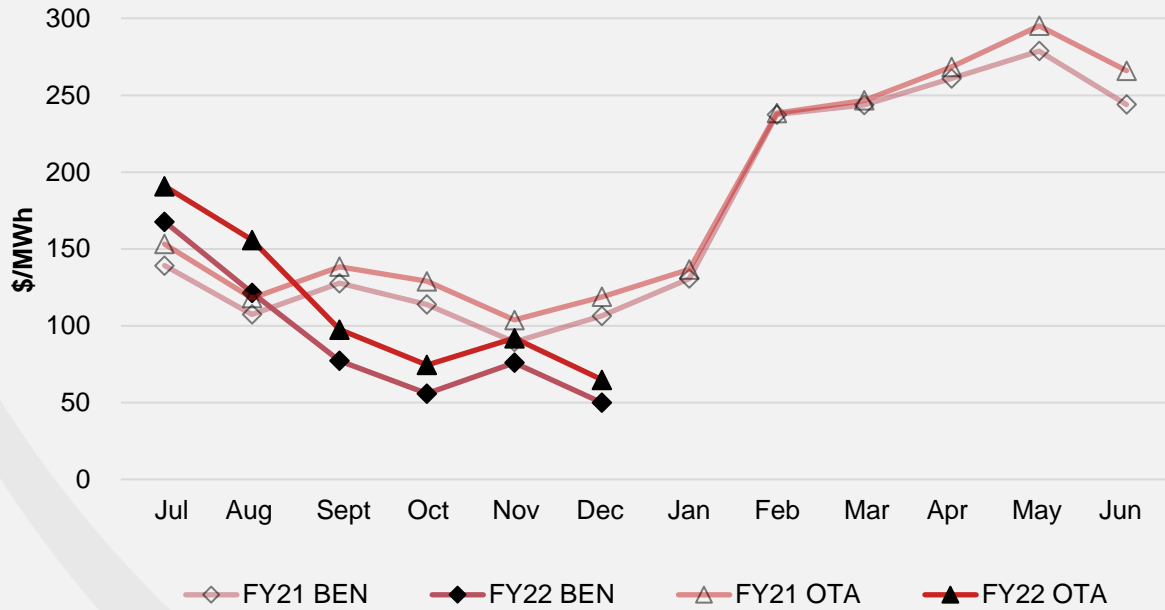


Benmore



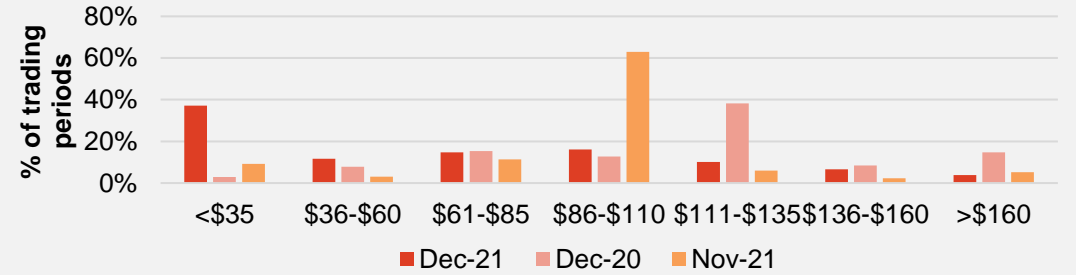
Wholesale market.

Wholesale electricity pricing

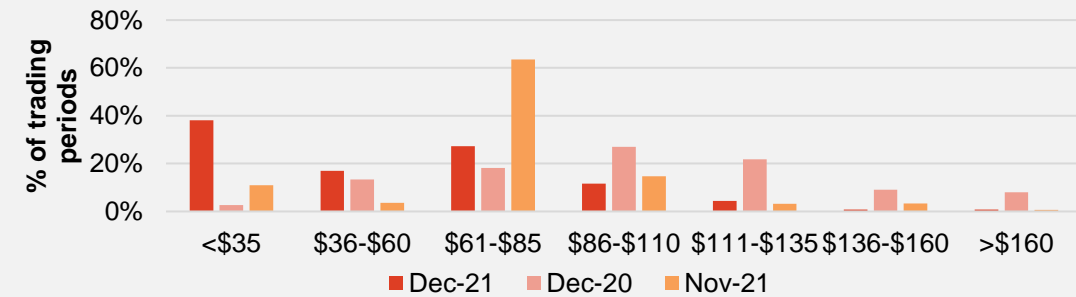


Distribution of wholesale market price by trading periods

Otahuhu



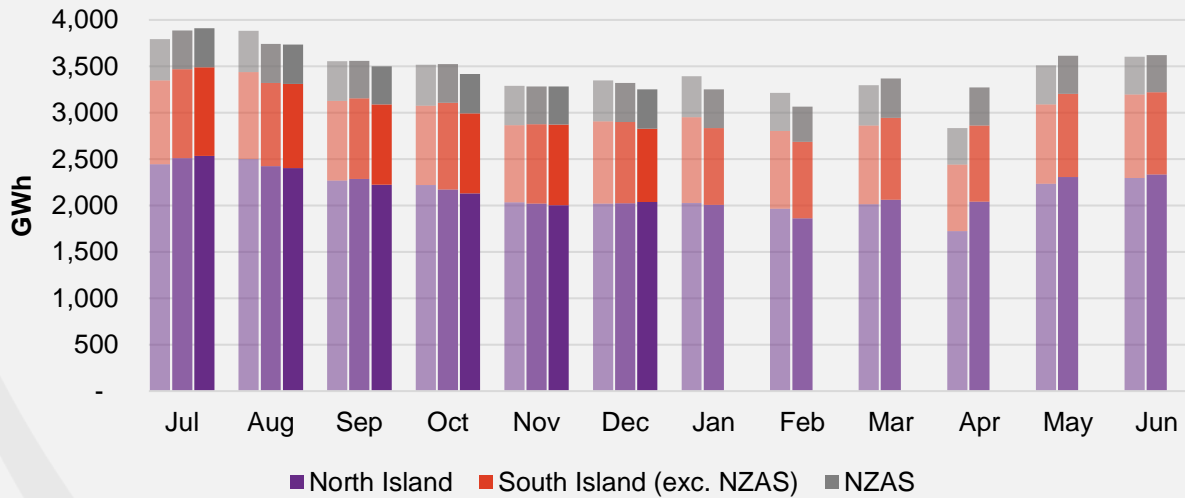
Benmore



Electricity demand.

Total national demand

FY20, 21 and 22 respectively

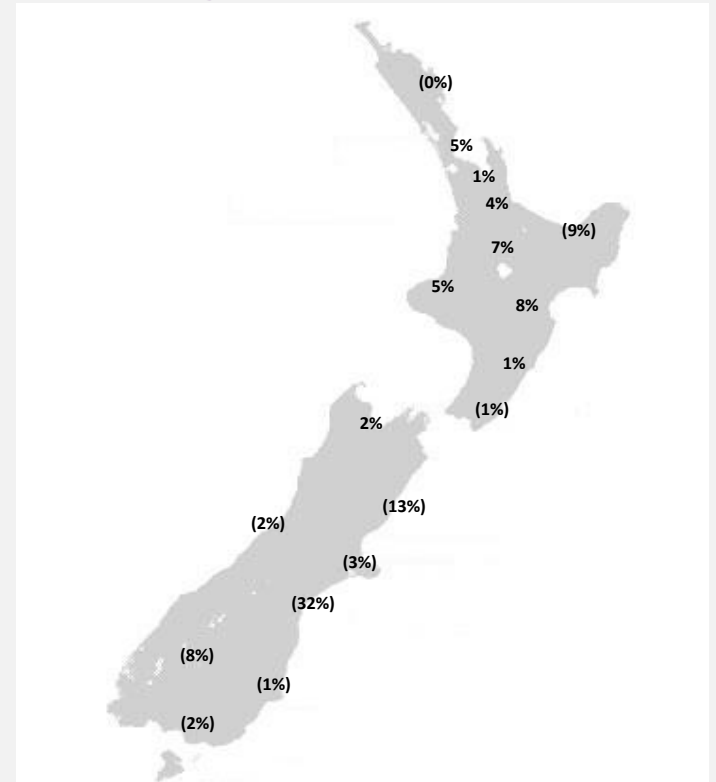


- » New Zealand electricity demand was down 2.1% on December 2020 (down 2.9% on December 2019):
 - Cumulative 12 months demand for January 2021 to December 2021 of 41,289 GWh is up 0.3% to the prior comparative period.

Source: Contact and Electricity Authority grid demand (reconciled) <http://www.emi.ea.govt.nz>

Regional demand change (%) on December 2020

Nationwide temperatures for December 2021 were 17.4°C, 1.6°C higher than December 2020: 15.8°C

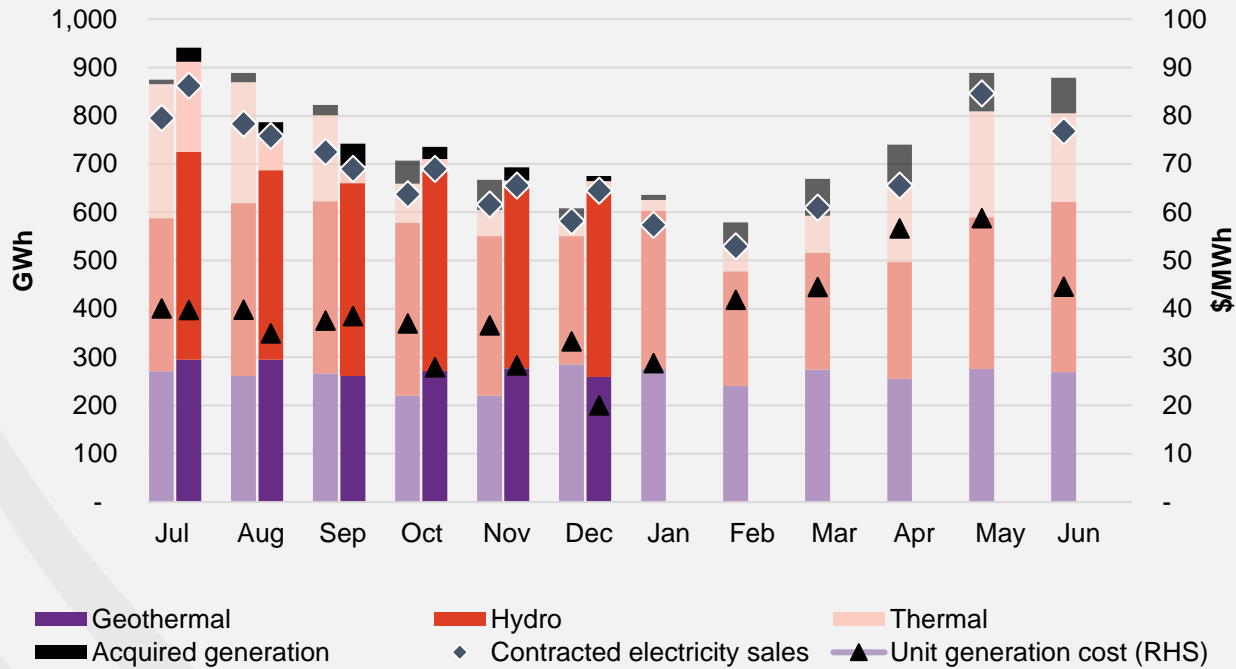


Regional demand is excluding NZAS

Business performance.

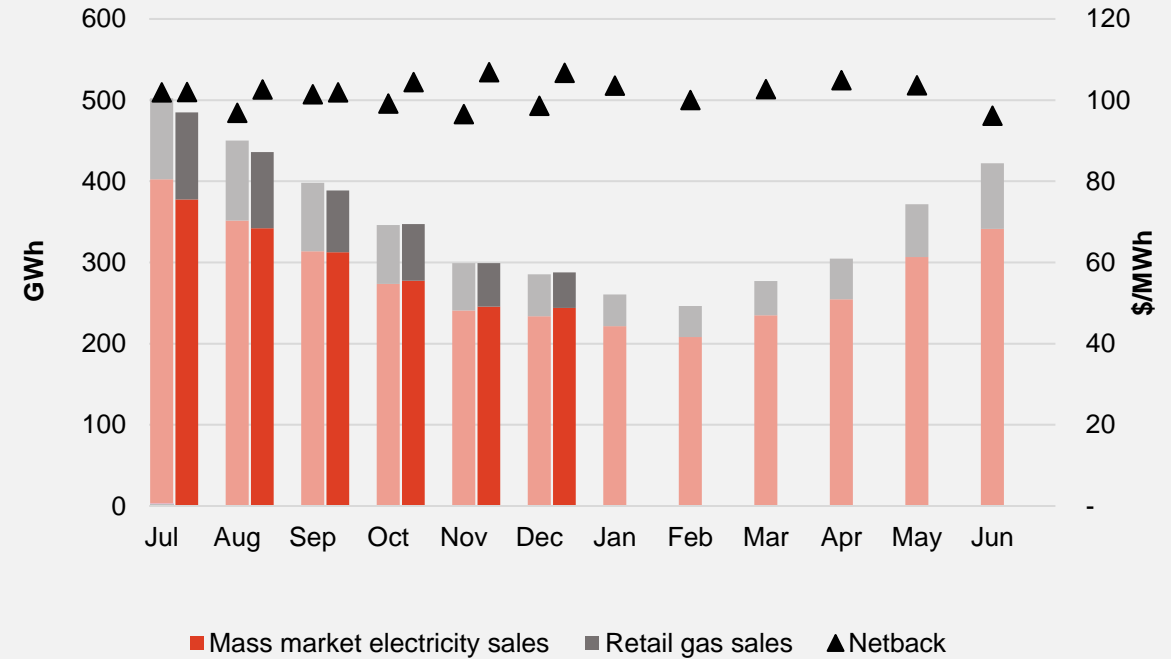
Wholesale

Generation mix, gross sales position and unit generation cost (FY21 and 22 respectively)



Customer

Retail sales volumes and netback (FY21 and 22 respectively)



Operational data.

		Measure	The month ended December 21	The month ended December 20	The month ended November 21	Six months ending December 21	Six months ending December 20
Customer	Mass market electricity sales	GWh	244	234	245	1,800	1,813
	Retail gas sales	GWh	44	52	54	444	465
	Mass market electricity and gas sales	GWh	288	286	299	2,244	2,278
	Average electricity sales price	\$/MWh	257.30	256.13	257.14	248.80	245.84
	Electricity direct pass thru costs	\$/MWh	(121.31)	(120.78)	(114.58)	(112.26)	(109.82)
	Cost to serve	\$/MWh	(21.34)	(21.07)	(22.08)	(17.62)	(17.72)
	Customer netback	\$/MWh	106.73	98.67	106.89	103.76	99.33
	Energy cost	\$/MWh	(86.34)	(71.14)	(86.19)	(96.61)	(86.32)
	Actual electricity line losses	%	6%	8%	6%	7%	7%
	Retail gas sales	PJ	0.2	0.2	0.2	1.6	1.7
	Electricity ICPs	#	422,000	404,000	419,500	415,500	409,000
	Gas ICPs	#	68,000	64,000	68,000	67,000	64,500
	Broadband connections	#	62,000	38,000	60,000	57,500	33,000
Wholesale	Electricity sales to Customer business	GWh	261	253	262	1,928	1,959
	Electricity sales to Commercial and Industrial	GWh	126	171	126	718	982
	Electricity CFD sales	GWh	257	157	268	1,654	1,198
	Contracted electricity sales	GWh	644	582	655	4,300	4,138
	Steam sales	GWh	53	64	65	361	390
	Total electricity and steam net revenue	\$/MWh	83.30	70.29	81.73	100.67	84.00
	C&I netback (at the ICP)	\$/MWh	68.49	59.87	72.16	85.43	79.48
	C&I line losses	%	13%	4%	5%	4%	4%
	Thermal generation	GWh	22	27	15	360	870
	Geothermal generation	GWh	259	285	277	1,659	1,524
	Hydro generation	GWh	383	266	374	2,391	1,984
	Spot electricity sales	GWh	665	578	666	4,411	4,378
	Electricity sales - Direct	GWh	9	9	9	47	48
	Acquired generation	GWh	11	30	27	162	189
	Electricity generated (or acquired)	GWh	684	617	702	4,620	4,615
	Unit generation cost (including acquired generation)	\$/MWh	(20.03)	(33.29)	(28.32)	(32.15)	(37.69)
	Spot electricity purchases	GWh	(379)	(415)	(379)	(2,599)	(2,893)
	CFD sale settlements	GWh	(257)	(157)	(268)	(1,654)	(1,198)
	Spot exposed purchases / CFD settlement	GWh	(636)	(573)	(647)	(4,253)	(4,091)
	Spot revenue and settlement on acquired generation (GWAP)	\$/MWh	53.66	110.54	80.07	103.64	117.09
	Spot purchases and settlement on CFDs sold (LWAP)	\$/MWh	(60.26)	(116.31)	(87.02)	(112.59)	(125.10)
LWAP/GWAP	%	112%	105%	109%	109%	107%	
Gas used in internal generation	PJ	0.4	0.5	0.4	4.3	8.2	
Gas storage net movement (extraction) / injection	PJ	0.4	(0.1)	0.5	2.0	(1.1)	
Contact	Total customer connections	#	559,000	514,000	555,000	548,000	512,000

Environment, Social and Governance (ESG)

Material theme	Measure	Unit	Q2 FY22	Q2 FY21
Climate Change	Emissions from generation assets ¹	kt CO ² -e	118	167
	Greenhouse Gas (GHG) intensity of generation ²	kt CO ² -e / GWh	0.058	0.091
Water	Freshwater take ³	Million cubic metres	0.76	0.48
	Non-consumptive water usage ⁴	Million cubic metres	4,801	4,703
	Geothermal fluid discharge to awa (rivers)	Million cubic metres	3.58	4.77
Biodiversity	Native rākau (trees) planted by Contact ⁵	#	18,434	5,679
	Pests caught ⁶	#	1,893	1,164
Community wellbeing	Community initiatives and organisations supported	#	23	*
Access to energy	Customer accepted (after standard credit checking / after prepay)	%	93% / 96%	92% / 94%

Note: This information is updated quarterly (September, December, March, June)

¹ Scope 1 – Stationary combustion. In FY21 stationary combustion was 99.97% of Contact's total Scope 1 emissions

² Carbon equivalent from stationary combustion / electricity generated and sold via the spot wholesale market

³ Freshwater taken to support operations at geothermal and thermal and includes Council take in Q2 FY22

⁴ Water that flows through our Roxburgh power station and cooling water for our geothermal power stations

⁵ Does not include DrylandsCarbon activities

⁶ Predominantly stoats, rats and possums

* Data has not historically been collected by quarter

Keep in touch.

Investors

Matthew Forbes – GM Corporate Finance

-  investor.centre@contactenergy.co.nz
-  contact.co.nz/aboutus/investor-centre
-  +64 21 072 8578

To find out more about Contact Energy

-  contact.co.nz
-  [@ContactEnergy](https://twitter.com/ContactEnergy)
-  [Linkedin.com/company/contact-energy-ltd](https://www.linkedin.com/company/contact-energy-ltd)
-  [Facebook.com/contactenergy](https://www.facebook.com/contactenergy)
-  [Youtube.com/ContactEnergy](https://www.youtube.com/ContactEnergy)