


DSL Home Gateway Quick Start

1 Product Overview

- System power supply: See the nameplate on the device
- Ambient temperature: 0°C to +40°C
- Ambient humidity: 5%–95% (non-condensing)

For other technical specifications, see the following table.

Product	Function
DG8245V	<ul style="list-style-type: none">● 1 DSL port● 1 Ethernet WAN Port● 4 Ethernet LAN ports● 2 FXS ports● 1 USB port● 2.4 GHz and 5 GHz Wi-Fi® access

 The appearance shown in this document may be different from the actual appearance of the product. The actual product provided by the carrier prevails.

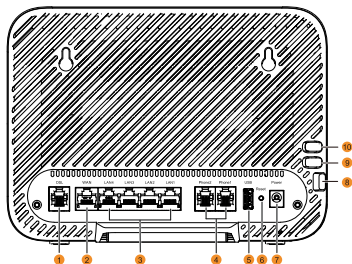
2 Indicator Description

 Power  DSL  Internet  WLAN  WAN  LAN1  LAN2  LAN3  LAN4  VoIP  USB

Indicator	Status	Description
Power	Steady green	The DSL home gateway is powered on.
	Off	The DSL home gateway is powered off or faulty.
DSL	Steady green	A DSL connection has been set up and activated.
	Green blinking	A DSL connection is being activated.
	Off	No DSL connection has been set up, or the DSL connection is faulty.
Internet	Steady green	The DSL home gateway is connected to the Internet in router mode, but no data is being transmitted.
	Green blinking	<ul style="list-style-type: none">● The DSL home gateway is being connected to the Internet in router mode. (Blinks 4 times per second.)● The DSL home gateway is connected to the Internet in router mode, and data is being transmitted. (Blinks twice per second.)
	Off	<ul style="list-style-type: none">● The WAN port is not connected to a network cable.● The DSL line is not activated.● The DSL home gateway is in bridge mode.
	Steady green	The WLAN function is enabled, but no data is being transmitted.
WLAN	Green blinking	<ul style="list-style-type: none">● The WLAN function is enabled, and data is being transmitted. (Blinks twice per second.)● The DSL home gateway is attempting to connect to a wireless client over the WLAN using the WPS function. The WLAN indicator blinks for 120s. (Blinks once per second.)
	Off	The WLAN function is disabled.
	Steady green	The WAN port is connected to a network cable.
WAN	Off	The WAN port is not connected to a network cable.

Indicator	Status	Description
LAN1– LAN4	Steady green	The LAN port is connected to an Ethernet device (such as a computer) with a network cable, but no data is being transmitted.
	Green blinking	The LAN port is connected to an Ethernet device with a network cable, and data is being transmitted.
	Off	The LAN port is not connected to any Ethernet device.
VoIP	Steady green	The DSL home gateway is registered with an SIP server, but no data is being transmitted.
	Green blinking	<ul style="list-style-type: none"> The DSL home gateway is being registered with an SIP server. (Blinks twice per second.) The DSL home gateway is registered with an SIP server, and data is being transmitted. (Blinks 4 times per second.)
	Off	No VoIP service, or VoIP WAN configuration exists.
USB	Steady green	The DSL home gateway is connected to a USB device, but no data is being transmitted.
	Blinking green	The DSL home gateway is connected to a USB device, and data is being transmitted.
	Off	The DSL home gateway is not connected to any USB device.


3 Ports and Buttons



No.	Item	Description
1	DSL	Connects to a DSL filter or telephone socket.
2	WAN	Connects to an Ethernet device that provides Internet access, such as a modem or switch.
3	LAN4–LAN1	Connects to Ethernet devices, such as computers, set-top boxes (STBs), and switches.
4	Phone2–Phone1	Connects to a telephone.
5	USB	Connects to a USB device.
6	Reset	<p>Restores the DSL home gateway to its default settings or resets the DSL home gateway.</p> <ul style="list-style-type: none"> To restore the DSL home gateway to its default settings, press and hold the Reset button for more than 6s after the DSL home gateway is powered on, and then release the button. After the DSL home gateway is restored to its default settings, all customized user data will be lost. Use this function only when necessary. To reset the DSL home gateway, press and hold the Reset button for not more than 6s after the DSL home gateway is powered on.
7	Power	Connects to a power adapter.

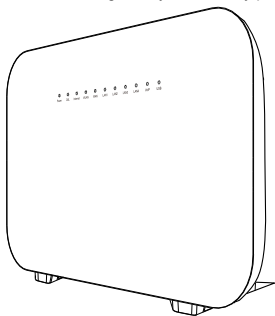
No.	Item	Description
8	On/Off	Powers the DSL home gateway on or off.
9	WLAN	Enables or disables the WLAN function.
10	WPS	Starts Wi-Fi protected setup (WPS) negotiation.

4 Installing the DSL Home Gateway

-  • Ensure that there are no obstacles, such as concrete or wooden walls, between the computer and DSL home gateway.
- Ensure that the computer and DSL home gateway are far from electric appliances that generate strong magnetic or electric fields, such as microwave ovens.
- Keep 10 cm clearance on all sides to ensure adequate ventilation.

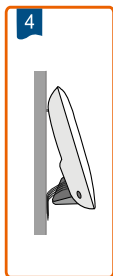
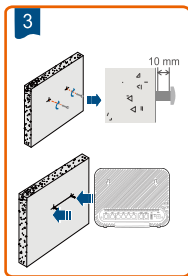
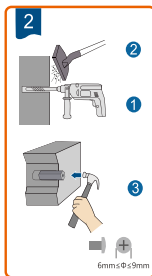
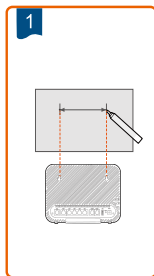
Placing the DSL Home Gateway Horizontally on the Desk

The following figure shows a DG8245V home gateway horizontally placed on a desk.



Mounting the DG8245V Home Gateway Against the Wall

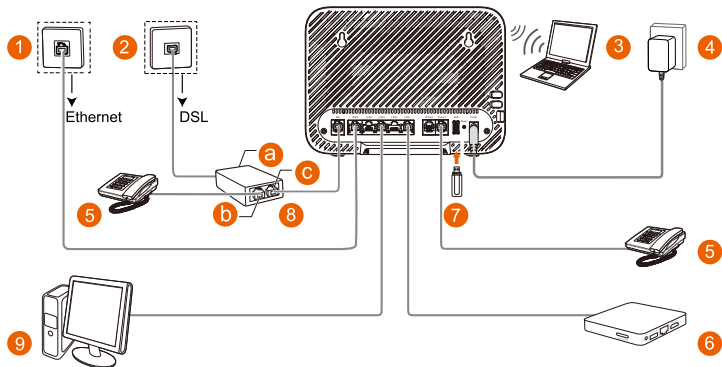
1. Mark the positions of two holes used for mounting the DSL home gateway, and ensure that the two holes have the same spacing as the two mounting holes.
2. Select a proper drill according to the outer diameter of the screws. Use this drill to drill the marked positions on the wall. Then, clean the wall and install two expansion bolts.
3. Use a screwdriver to fasten the screws into the expansion bolts, leaving the heads of the screws 10 mm over the wall. Then, install the DSL home gateway.



5 Connecting Cables

The DSL home gateway supports two upstream connection modes: DSL and Ethernet. Choose a suitable access based on requirements.

Connect your devices in the sequence indicated in the following figure.



1 Network port on the wall	2 Telephone jack on the wall	3 Laptop computer
4 Power adapter	5 Telephone	6 STB
7 USB device	8 Splitter	9 Desktop computer
a Line port	b Telephone port	c Modem port

- Only DSL upstream transmission or Ethernet upstream transmission can be used at a time.
- When configuring the DSL home gateway for the first time, use an Ethernet cable to connect the DSL home gateway to a computer.

6 Powering the DSL Home Gateway on

To turn the DSL home gateway on, press the **On/Off** button.

After the DSL home gateway is powered on, the **Power** indicator turns on. If the indicator does not turn on as expected, ensure that everything is plugged in correctly.

7 Configuring Network Access Parameters

1. Set the IP address of the PC in the same subnet as the web address (printed on the nameplate of the DSL home gateway).
2. Open a browser. In the address bar, enter the web address (printed on the nameplate of the DSL home gateway). Press **Enter**.
3. Enter the login user name and password (printed on the nameplate of the DSL home gateway). Click **Log In**.

- To protect against unauthorized access, change the password after the first login.
- The system will be locked if you enter incorrect user name or password three consecutive times. After one minute, it will be unlocked.
- If you do not perform any operations after logging in to the system for five minutes, you will exit the system and the system automatically returns to the login page.

4. On the **Internet configuration** page, input the correct Internet access account and password provided by the Internet service provider (ISP). Then, click **Next**.

- Click **Next** or **Skip** directly if you cannot configure the Internet access account and password.
- When the user logs in to the DSL home gateway web page for the first time, this page is displayed. In other cases, you need to click **Fast Setting** on the upper right corner of the page to go to this page.

5. On the **Wi-Fi configuration** page, enter your desired SSID (WLAN name) and WLAN password. Then, click **Next**.

- To obtain the default SSID and key, check the nameplate. To better secure your WLAN, promptly change the SSID and key.

After you complete the preceding settings, check the status of the **Internet** indicator light. When the **Internet** indicator light turns steady green, you can start browsing the Internet.

You need to perform the preceding operations on a computer once only. The next time you power on your computer, you can browse the Internet without performing the same configurations.

For a DSL home gateway that supports Wi-Fi, its wireless coverage is subject to the number, thickness, and positions of walls, materials, ceilings, or other objects that radio signals traverse. Besides, material types and background radio frequency (RF) noise also affect the coverage. You can maximize the coverage of a wireless network using the following methods:

1. Decrease the number of walls and ceilings between DSL home gateway and other network devices. A wall or ceiling reduces the coverage of a wireless network by 1–30 m. Install the DSL home gateway at a proper place to avoid walls or ceilings if possible.
2. Observe the straight-line rule when installing network devices. The distance for which signals have to traverse at a 45° corner of two 0.5-m thick walls is about 1 m. Install the devices at places where signals can directly traverse walls or ceilings to better receive signals.
3. Be aware of that building materials have different impacts on the wireless network coverage. A metal door or aluminum wall may limit the coverage of a wireless network. Materials and objects such as fiberglass (FRP) products, metal products, insulative walls, filing cabinets, bricks, and concrete weaken radio signals. If possible, install access points, wireless routers, and computers far away from these materials.
4. When connecting DSL home gateway to a wireless network, keep it far from the following devices.
 - Electronic devices or components that produce RF noises (keep the DSL home gateway 2-m away from such a device.).
 - 2.4 GHz wireless mobile phones or X-10 devices (such as microwave ovens, home security systems, bluetooth devices, and refrigerators) that greatly weaken or even eliminate radio signals. Even if a 2.4 GHz wireless mobile phone is not connected to a wireless network, the phone base still sends signals that interfere the wireless network.

8 Safety Information

This section contains important information about the operation of your device. It also contains information about how to use the device safely. Read this information carefully before using your device.

Electronic device

Do not use your device if using the device is prohibited. Do not use the device if doing so causes danger or interference with other electronic devices.

Interference with medical equipment

- Follow rules and regulations set forth by hospitals and health care facilities. Do not use your device where prohibited.
- Some wireless devices may affect the performance of hearing aids or pacemakers. Consult your service provider for more information.

- Pacemaker manufacturers recommend that a minimum distance of 15 cm be maintained between a device and a pacemaker to prevent potential interference with the pacemaker. If using a pacemaker, hold the device on the side opposite the pacemaker and do not carry the device in your front pocket.

Areas with flammables and explosives

- Do not use the device where flammables or explosives are stored (in a gas station, oil depot, or chemical plant, for example). Using your device in these environments increases the risk of explosion or fire. In addition, follow the instructions indicated in text or symbols.
- Do not store or transport the device in containers with flammable liquids, gases, or explosives.

Operating environment

- Avoid dusty, damp, or dirty environments. Avoid magnetic fields. Using the device in these environments may result in circuit malfunctions.
- Before connecting and disconnecting cables, stop using the device and disconnect it from the power supply. Ensure that your hands are dry during operation.
- Place the device on a stable surface.
- Keep the device away from electronic appliances that generate strong magnetic or electric fields, such as a microwave oven or refrigerator.
- During thunderstorms, power off your device and remove all cables connected to it to protect against lightning strikes.
- Do not use your device during thunderstorms to protect your device against any danger caused by lightning.
- Ideal operating temperatures are 0°C to 40°C. Extreme heat or cold may damage your device or accessories.
- Keep the device and accessories in a well-ventilated and cool area away from direct sunlight. Do not enclose or cover your device with towels or other objects. Do not place the device in a container with poor heat dissipation, such as a box or bag.
- To protect your device or accessories from fire or electrical shock hazards, avoid rain and moisture.
- Keep the device away from sources of heat and fire, such as a heater, microwave oven, stove, water heater, radiator, or candle.
- Do not place any object, such as a candle or a water container, on the device. If any foreign object or liquid enters the device, immediately stop using it, power it off, and remove all cables connected to it. Then, contact an authorized service center.
- Observe local laws and regulations, and respect the privacy and legal rights of others.
- Do not block device openings. Reserve a minimum of 10 cm around the device to dissipate heat.
- Stop using your device or applications for a while if the device is overheated. If skin is exposed to an overheated device for an extended period, low temperature burn symptoms, such as red spots and darker pigmentation, may occur.
- Do not touch the device's antenna. Otherwise, communication quality may be reduced.
- Do not allow children or pets to bite or suck the device or accessories. Doing so may result in damage or explosion.
- The device should be installed and operated with a minimum distance of 20 cm between the radiator and your body.
- Keep the device in a place with good reception. The distance between the device and other metal materials (such as metal brackets or metal doors and windows) should be greater than 25 cm and the distance between the devices should be greater than 30 cm.

Child's safety

- Comply with all precautions with regard to child's safety. Letting children play with the device or its accessories may be dangerous. The device includes detachable parts that may present a choking hazard. Keep away from children.
- The device and its accessories are not intended for use by children. Children should only use the device with adult supervision.

Accessories

- Using an unapproved or incompatible power adapter, charger or battery may cause fire, explosion or other hazards.
- Choose only accessories approved for use with this model by the device manufacturer. The use of any other types of accessories may void the warranty, may violate local regulations and laws, and may be dangerous. Please contact your retailer for information about the availability of approved accessories in your area.

Power adapter safety

- The power plug is intended to serve as a disconnect device.
- For pluggable devices, the socket-outlet shall be installed near the devices and shall be easily accessible.
- Unplug the power adapter from electrical outlets and the device when not in use.
- Do not drop or cause an impact to the power adapter. If it is damaged, take it to an authorized service center for inspection.
- If the power cable is damaged (for example, the cord is exposed or broken), or the plug loosens, stop using it at once. Continued use may lead to electric shocks, short circuits, or fire.
- Do not touch the power cord with wet hands or pull the power cord to disconnect the power adapter.
- Do not touch the device or the power adapter with wet hands. Doing so may lead to short circuits, malfunctions, or electric shocks.
- If your power adapter has been exposed to water, other liquids, or excessive moisture, take it to an authorized service center for inspection.
- The described input voltage range should comply with the local power grid. For example, the input voltage of the adapter is 200–240 V AC for European Union; the input voltage of the adapter is 100–140 V AC for America.

Cleaning and maintenance

- During storage, transportation, and operation of the device, keep it dry and protect it from collision.
- Keep the device and accessories dry. Do not attempt to dry it with an external heat source, such as a microwave oven or hair dryer.
- Do not expose your device or accessories to extreme heat or cold. These environments may interfere with proper function and may lead to fire or explosion.
- Avoid collision, which may lead to device malfunctions, overheating, fire, or explosion.
- If the device is not going to be used for an extended period of time, power it off, and remove all cables connected to it.
- If anything unusual occurs (for example, if the device emits smoke or any unusual sound or smell), immediately stop using it, power it off, remove all cables connected to it, and contact an authorized service center.
- Do not trample, pull, or excessively bend any cable. Doing so may damage the cable, causing the device to malfunction.
- Before you clean or maintain the device, stop using it, stop all applications, and disconnect all cables connected to it.
- Do not use any chemical detergent, powder, or other chemical agents (such as alcohol and benzene) to clean the device or accessories. These substances may cause damage to parts or present a fire hazard. Use a clean, soft, and dry cloth to clean the device and accessories.
- Do not place magnetic stripe cards, such as credit cards and phone cards, near the device for extended periods of time. Otherwise the magnetic stripe cards may be damaged.
- Do not dismantle or remanufacture the device and its accessories. This voids the warranty and releases the manufacturer from liability for damage. In case of damage, contact an authorized service center for assistance or repair.

Disposal and recycling information



The crossed-out wheeled-bin symbol on your product, literature or packaging reminds you that all electronic products must be taken to separate waste collection points at the end of their working lives; they must not be disposed of in the normal waste stream with household garbage. It is the responsibility of the user to dispose of the equipment using a designated collection point or service for separate recycling of waste electrical and electronic equipment (WEEE) according to local laws.

Proper collection and recycling of your equipment helps ensure electrical and electronic equipment (EEE) waste is recycled in a manner that conserves valuable materials and protects human health and the environment, improper handling, accidental breakage, damage, and/or improper recycling at the end of its life may be harmful for health and environment. For more information about where and how to drop off your EEE waste, please contact your local authorities, retailer or household waste disposal service.

Disposal of the device is subject to WEEE Directive Recast (Directive 2012/19/EU). The purpose of separating WEEE from other waste is to minimize the potential environmental impacts and human health risk of any hazardous substances that may be present.

Reduction of hazardous substances

This device is compliant with the REACH Regulation [Regulation (EC) No 1907/2006] and RoHS Directive Recast (Directive 2011/65/EU).

EU regulatory conformance

Statement

English: Hereby, Huawei Technologies Co., Ltd. declares that this radio equipment is in compliance with Directive 2014/53/EU. The full text of the EU declaration of conformity is available at the following internet address: www.huawei.com/en/product-certification.

Albanian: Nëpërmjet këtij dokumenti "Huawei Technologies Co., Ltd." deklaron se radiopajisja është në pajtim me direktivën 2014/53/EU. Teksti i plotë i deklaratës së konformitetit të BE-së ofrohet në adresën e mëposhtme të internetit: www.huawei.com/en/product-certification.

Bosnian: Kompanija Huawei Technologies Co., Ltd. izjavljuje da je ova radijska oprema usklađena s Direktivom 2014/53/EU. Cjelokupni tekst izjave o usklađenosti za EU dostupan je na sljedećoj internetskoj adresi: www.huawei.com/en/product-certification.

Bulgarian: С настоящото Huawei Technologies Co., Ltd. декларира, че радиосъоръженията са в съответствие с Директива 2014/53/EU. Пълният текст на декларацията за съответствие на ЕС може да намерите на следния интернет адрес: www.huawei.com/en/product-certification.

Croatian: Tvrtka Huawei Technologies Co., Ltd. ovim putem izjavljuje da je ova radijska oprema u skladu s direktivom 2014/53/EU. Potpuni tekst EU izjave o sukladnosti dostupan je na internetskoj adresi u nastavku: www.huawei.com/en/product-certification.

Czech: Společnost Huawei Technologies Co., Ltd. tímto prohlašuje, že toto rádiové zařízení je v souladu se směrnici 2014/53/EU. Celý text prohlášení o shodě EU je k dispozici na následující webové adrese: www.huawei.com/en/product-certification.

Danish: Huawei Technologies Co., Ltd. erklærer hermed, at dette radioudstyr er i overensstemmelse med Direktiv 2014/53/EU. EU-overensstemmelseserklæringen kan læses i sin helhed på følgende webadresse: www.huawei.com/en/product-certification.

Dutch: Hierbij verklaart Huawei Technologies Co., Ltd. dat deze radioapparatuur voldoet aan richtlijn 2014/53/EU. De volledige tekst van de EU-verklaring van conformiteit is beschikbaar via het volgende internetadres: www.huawei.com/en/product-certification.

Estonian: Käesolevaga kinnitab Huawei Technologies Co., Ltd., et kõnealune raadiosideade vastab direktiivi 2014/53/EU nõuetele. Euroopa Liidu vastavusdeklaratsiooni täielik versioon on kättesaadav järgmiselt veebiaadressil: www.huawei.com/en/product-certification.

Finnish: Huawei Technologies Co. Ltd. vakuuttaa, että tämä radiolaite täyttää direktiivin 2014/53/EU vaatimukset. EU-vaatimustenmukaisuusvakuutus on kokonaisuudessaan saatavana seuraavasta osoitteesta: www.huawei.com/en/product-certification.



96725465_01

French: Huawei Technologies Co., Ltd. déclare par la présente que cet équipement radio est conforme à la directive 2014/53/EU. Le texte intégral de la déclaration de conformité UE est disponible à l'adresse Internet suivante : www.huawei.com/en/product-certification.

German: Die Huawei Technologies Co., Ltd. erklärt hiermit, dass diese Funkausrüstung die Richtlinie 2014/53/EU erfüllt. Den vollständigen Text der EU-Konformitätserklärung finden Sie unter: www.huawei.com/en/product-certification.

Greek: Δια του παρόντος, η Huawei Technologies Co., Ltd. δηλώνει πως αυτός ο ραδιοεξοπλισμός είναι συμβατός με την Οδηγία 2014/53/EU. Το πλήρες κείμενο της δήλωσης συμμόρφωσης Ε.Ε. είναι διαθέσιμο στην παρακάτω διαδικτυακή διεύθυνση: www.huawei.com/en/product-certification.

Hungarian: A Huawei Technologies Co., Ltd. kijelenti, hogy ez a rádióberendezés megfelel a 2014/53/EU irányelvnek. Az EU-megfelelőségi nyilatkozat teljes szövege a következő internetcímen érhető el: www.huawei.com/en/product-certification.

Icelandic: Hér með lýsir Huawei Technologies Co., Ltd. því yfir að þessi útværpsbúnaður sé í samræmi við tilskipun 2014/53/EU. Fullur texti EB samræmisýfirlýsingar er tiltekkur á eftirfarandi netfangi: www.huawei.com/en/product-certification.

Italian: con il presente documento Huawei Technologies Co., Ltd. dichiara che questa apparecchiatura radio è conforme alla Direttiva 2014/53/EU. Il testo completo della dichiarazione di conformità UE è disponibile al seguente indirizzo Internet: www.huawei.com/en/product-certification.

Latvian: Ar šo Huawei Technologies Co., Ltd. paziņo, ka šis radio aprīkojums ir atbilstošs direktīvai 2014/53/EU. Pilns ES atbilstības deklarācijas teksts ir lasāms šajā interneta adresē: www.huawei.com/en/product-certification.

Lithuanian: Šių dokumentu „Huawei Technologies Co., Ltd.“ patvirtina, kad šis radijo ryšio įrenginys atitinka Direktyvos 2014/53/EU reikalavimus. Visą ES atitikties deklaracijos tekstą rasite apsilankę šiuo interneto adresu: www.huawei.com/en/product-certification.

Macedonian: Со ова, Huawei Technologies Co., Ltd. изјавува дека оваа радио опрема е усогласена со Директивата 2014/53/EU. Целосниот текст на Декларацијата за усогласеност на EU може да се најде на следната интернет адреса: www.huawei.com/en/product-certification.

Montenegro: Huawei Technologies Co., Ltd. ovim izjavljuje da je ova radio-oprema u skladu sa Direktivom 2014/53/EU. Puni tekst EU deklaracije u usaglašenosti dostupan je na sljedećoj internet adresi: www.huawei.com/en/product-certification.

Norwegian: Huawei Technologies Co., Ltd. erklærer herved at dette radioutstyret er i samsvar med direktivet 2014/53/EU. Den fullstendige teksten i EU-samsvarserklæringen er tilgjengelig på følgende Internett-adresse: www.huawei.com/en/product-certification.

Polish: Firma Huawei Technologies Co., Ltd. niniejszym deklaruje, że to urządzenie radiowe spełnia wymagania dyrektywy 2014/53/EU. Pełny tekst deklaracji zgodności z przepisami unijnymi można znaleźć na stronie: www.huawei.com/en/product-certification.

Portuguese (Eu): Através do presente documento, a Huawei Technologies Co., Ltd. declara que este equipamento de rádio está em conformidade com a Diretiva 2014/53/EU. O texto completo da Declaração de Conformidade da UE está disponível no seguinte endereço de Internet: www.huawei.com/en/product-certification.

Romanian: Astfel, Huawei Technologies Co., Ltd. declară că acest echipament radio este în conformitate cu Directiva 2014/53/EU. Textul complet al declarației de conformitate UE este disponibil la următoarea adresă de internet: www.huawei.com/en/product-certification.

Serbian: Huawei Technologies Co., Ltd. izjavljuje da je ova radio-oprema usaglašena sa direktivom 2014/53/EU. Puni tekst deklaracije u usaglašenosti EU je dostupan na sledehoj internet adresi: www.huawei.com/en/product-certification.

Slovak: Spoločnosť Huawei Technologies Co., Ltd. týmto vyhlasuje, že toto rádiové zariadenie je v súlade so smernicou 2014/53/EU. Úplné znenie vyhlásenia o zhode EÚ je dostupné na nasledujúcej internetovej adrese: www.huawei.com/en/product-certification.

Slovenian: Družba Huawei Technologies Co., Ltd. izjavlja, da je ta radijska oprema v skladu z Direktivo 2014/53/EU. Celotno besedilo izjave EU o skladnosti je na voljo na naslednjem internetnem naslovu: www.huawei.com/en/product-certification.

Spanish: Por medio del presente, Huawei Technologies Co., Ltd. declara que este equipo de radio cumple con la directiva 2014/53/UE. El texto completo de la declaración de conformidad

correspondiente a la Unión Europea se encuentra disponible en el siguiente sitio de Internet: www.huawei.com/en/product-certification.

Swedish: Huawei Technologies Co., Ltd. deklarerar härmed att den här radioutrustningen uppfyller direktiv 2014/53/EU. Den fullständiga EG-försäkran om överensstämmelse finns på följande webbadress: www.huawei.com/en/product-certification.

Turkish: İşbu vesile ile Huawei Technologies Co., Ltd., bu telsiz cihazının 2014/53/EU sayılı Direktif ile uyumlu olduğunu beyan eder. AB uygunluk beyanının tam metni, aşağıdaki internet adresinde mevcuttur: www.huawei.com/en/product-certification.

This device may be operated in all member states of the EU.

Observe national and local regulations where the device is used.

This device may be restricted for use, depending on the local network.

Restrictions in the 5 GHz band:

English: According to Article 10 (10) of Directive 2014/53/EU, the packaging shows that this radio equipment will be subject to some restrictions when placed on the market in Belgium (BE), Bulgaria (BG), the Czech Republic (CZ), Denmark (DK), Germany (DE), Estonia (EE), Ireland (IE), Greece (EL), Spain (ES), France (FR), Croatia (HR), Italy (IT), Cyprus (CY), Latvia (LV), Lithuania (LT), Luxembourg (LU), Hungary (HU), Malta (MT), Netherlands (NL), Austria (AT), Poland (PL), Portugal (PT), Romania (RO), Slovenia (SI), Slovakia (SK), Finland (FI), Sweden (SE), the United Kingdom (UK), Turkey (TR), Norway (NO), Switzerland (CH), Iceland (IS), and Liechtenstein (LI).

The WLAN function for this device is restricted to indoor use only when operating in the 5150 to 5350 MHz frequency range.

Albanian: Në përputhje me nenin 10, paragrafi 10 të Direktivës 2014/53/BE, paketimi tregon se kjo radiopajisje u nënshtrhet kufizimeve të caktuara kur hidhet në treg në Belgjikë (BE), Bullgari (BG), Çeki (CZ), Danimarkë (DK), Gjermani (DE), Estoni (EE), Irlandë (IE), Greqi (EL), Spanjë (ES), Francë (FR), Kroaci (HR), Itali (IT), Qipro (CY), Letoni (LV), Lituani (LT), Luksemburg (LU), Hungari (HU), Maltë (MT), Holandë (NL), Austri (AT), Poloni (PL), Portugali (PT), Rumania (RO), Slloveni (SI), Sllovaki (SK), Finlandë (FI), Suedi (SE), Mbretëri të Bashkuar (UK), Turqi (TR), Norvegji (NO), Zvicër (CH), Islandë (IS) dhe Lihtenshtajni (LI).

Funksioni WLAN i kësaj pajisjeje është i kufizuar për përdorim vetëm në ambiente të mbyllura kur punon në reze frekuence 5150 deri në 5350 MHz.

Bosnian: U skladu sa Članom 10 (10) Direktive 2014/53/EU, ambalaža prikazuje da će ova radio oprema biti predmet određenih zabrana prilikom plasiranja na tržište u Belgiji (BE), Bugarskoj (BG), Češkoj Republici (CZ), Danskoj (DK), Njemačkoj (DE), Estoniji (EE), Irskoj (IE), Grčkoj (EL), Španiji (ES), Francuskoj (FR), Hrvatskoj (HR), Italiji (IT), Kipru (CY), Latviji (LV), Litvaniji (LT), Luksemburgu (LU), Mađarskoj (HU), Malti (MT), Nizozemskoj (NL), Austriji (AT), Poljskoj (PL), Portugalu (PT), Rumuniji (RO), Sloveniji (SI), Slovačkoj (SK), Finskoj (FI), Švedskoj (SE), Ujedinjenom Kraljevstvu (UK), Turskoj (TR), Norveškoj (NO), Švicarskoj (CH), Islandu (IS), i Linhenštajnu (LI).

WLAN funkcija ovog uređaja je ograničena na upotrebu u zatvorenom samo u slučaju rada u frekvencijskom opsegu od 5150 do 5350 MHz.

Bulgarian: В съответствие с член 10, параграф 10 на Директива 2014/53/EU, опаковката посочва, че това радиооборудване ще бъде обект на някои ограничения, когато бъде пуснато на пазара в Белгия (BE), България (BG), Чехия (CZ), Дания (DK), Германия (DE), Естония (EE), Ирландия (IE), Гърция (EL), Испания (ES), Франция (FR), Хърватия (HR), Италия (IT), Кипър (CY), Латвия (LV), Литва (LT), Люксембург (LU), Унгария (HU), Малта (MT), Нидерландия (NL), Австрия (AT), Полша (PL), Португалия (PT), Румъния (RO), Словения (SI), Словакия (SK), Финландия (FI), Швеция (SE), Великобритания (UK), Турция (TR), Норвегия (NO), Швейцария (CH), Исландия (IS) и Лихтенщайн (LI).

Функцията WLAN на това устройство е ограничена до използване само на закрито, когато се работи в честотния диапазон от 5150 до 5350 MHz.

Croatian: U skladu s članom 10 (10) Direktive 2014/53/EU pakiranje pokazuje da će ova radijska oprema podlijeagati jednakim ograničenjima koja važe za tržišta u Belgiji (BE), Bugarskoj (BG), Češkoj Republici (CZ), Danskoj (DK), Njemačkoj (DE), Estoniji (EE), Irskoj (IE), Grčkoj (EL), Španjolskoj (ES), Francuskoj (FR), Hrvatskoj (HR), Italiji (IT), Cipru (CY), Letoniji (LV), Litvaniji (LT), Luksemburgu (LU), Mađarskoj (HU), Malti (MT), Nizozemskoj (NL), Austriji (AT), Poljskoj (PL), Portugalu (PT),

Rumunskoj (RO), Sloveniji (SI), Slovačkoj (SK), Finskoj (FI), Švedskoj (SE), Ujedinjenom Kraljevstvu (UK), Turskoj (TR), Norveškoj (NO), Švicarskoj (CH), Islandu (IS) i Lichtenštajnu (LI).

WLAN funkcija ovog uređaja ograničena je na uporabu u zatvorenim prostorima samo kada radi u rasponu frekvencija od 5150 do 5350 MHz.

Czech: V souladu s Článkem 10 (10) směrnice 2014/53/EU, obal uvádí, že toto rádiové zařízení bude podléhat určitým omezením při uvádění na trh v Belgii (BE), Bulharsku (BG), České republice (CZ), Dánsku (DK), Německu (DE), Estonsku (EE), Irsku (IE), Řecku (EL), Španělsku (ES), Francii (FR), Chorvatsku (HR), Itálii (IT), Kypru (CY), Lotyšsku (LV), Litvě (LT), Lucembursku (LU), Maďarsku (HU), Maltě (MT), Nizozemsku (NL), Rakousku (AT), Polsku (PL), Portugalsku (PT), Rumunsku (RO), Slovinsku (SI), Slovensku (SK), Finsku (FI), Švédsku (SE), Velké Británii (UK), Turecku (TR), Norsku (NO), Švýcarsku (CH), Islandu (IS) a Lichtenštejnsku (LI).

Funkce WLAN tohoto zařízení je při provozu v kmitočtovém rozsahu 5150 až 5350 MHz omezena pouze na provoz uvnitř budov.

Danish: I henhold til artikel 10 (10) i direktiv 2014/53/EU, viser emballagen, at dette radioudstyr er underlagt nogle begrænsninger, når sælges i Belgien (BE), Bulgarien (BG), Tjekkiet (CZ), Danmark (DK), Tyskland (DE), Estland (EE), Irland (IE), Grækenland (EL), Spanien (ES), Frankrig (FR), Kroatien (HR), Italien (IT), Cypern (CY), Letland (LV), Litauen (LT), Luxembourg (LU), Ungarn (HU), Malta (MT), Nederlandene (NL), Østrig (AT), Polen (PL), Portugal (PT), Rumænien (RO), Slovenien (SI), Slovakiet (SK), Finland (FI), Sverige (SE), Storbritannien (UK), Tyrkiet (TR), Norge (NO), Schweiz (CH), Island (IS) og Liechtenstein (LI).

Denne enheds WLAN-funktion er begrænset til indendørs brug i frekvensområdet 5150 til 5350 MHz.

Dutch: In overeenstemming met artikel 10 (10) van richtlijn 2014/53/EU is deze radioapparatuur onderhevig aan beperkingen wanneer zij wordt verkocht in België (BE), Bulgarije (BG), Tsjechië (CZ), Denemarken (DK), Duitsland (DE), Estland (EE), Ierland (IE), Griekenland (EL), Spanje (ES), Frankrijk (FR), Kroatië (HR), Italië (IT), Cyprus (CY), Letland (LV) Litouwen (LT), Luxemburg (LU), Hongarije (HU), Malta (MT), Nederland (NL), Oostenrijk (AT), Polen (PL), Portugal (PT), Roemenië (RO), Slovenië (SI), Slowakije (SK), Finland (FI), Zweden (SE), het Verenigd Koninkrijk (UK), Turkije (TR), Noorwegen (NO), Zwitserland (CH), IJsland (IS), en Liechtenstein (LI).

De WLAN-functie van dit apparaat is beperkt tot gebruik binnenshuis bij werking binnen het frequentiebereik 5150 tot 5350 MHz.

Estonian: Direktiivi 2014/53/EU artikli 10 (10) põhjal näitab pakett, et raadioseadmele kehtivad piirangud, kui see anda välja Belgias (BE), Bulgaarias (BG), Tšehhis (CZ), Taanis (DK), Saksamaal (DE), Eestis (EE), Iirimaa (IE), Hispaanias (ES), Prantsusmaal (FR), Horvaatias (HR), Itaalias (IT), Küproses (CY), Lätis (LV), Leedus (LT), Luksemburgis (LU), Ungaris (HU), Maltas (MT), Hollandis (NL), Austrias (AT), Poolas (PL), Portugalis (PT), Rumeenias (RO), Sloveenias (SI), Slovakkias (SK), Soomes (FI), Rootsis (SE), Suurbritannias (UK), Türgis (TR), Norras (NO), Šveitsis (CH), Islandil (IS) ja Liechtensteinis (LI).

Sagedusvahemikus 5150–5350 MHz on selle seadme WLAN-funktsioon ette nähtud kasutamiseks ainult siseruumides.

Finnish: Direktiivin 2014/53/EU artiklan 10 (10) mukaan pakkauksessa ilmoitetaan, että tähän radiolaitteeseen kohdistuu tietyjä rajoituksia sen ollessa markkinoilla seuraavissa maissa: Belgia (BE), Bulgaria (BG), Tšekin tasavalta (CZ), Tanska (DK), Saksa (DE), Viro (EE), Irlanti (IE), Kreikka (EL), Espanja (ES), Ranska (FR), Kroatia (HR), Italia (IT), Kypros (CY), Latvia (LV), Liettua (LT), Luxemburg (LU), Unkari (HU), Malta (MT), Alankomaat (NL), Itävalta (AT), Puola (PL), Portugali (PT), Romania (RO), Slovenia (SI), Slovakia (SK), Suomi (FI), Ruotsi (SE), Iso-Britannia (UK), Turkki (TR), Norja (NO), Sveitsi (CH), Islanti (IS) ja Liechtenstein (LI).

Tämän laitteen WLAN-toiminto on rajoitettu käytettäväksi ainoastaan sisätiloissa, kun se toimii 5150–5350 MHz:n taajuusalueella.

French: Conformément à l'article 10, paragraphe 10, de la directive 2014/53/EU, l'emballage montre que ce matériel radiotéléphoniquesera soumis à certaines restrictions lorsqu'il est mis sur le marché dans les pays suivants: Belgique (BE), Bulgarie (BG), République tchèque (CZ), Danemark (DK), Allemagne (DE), Estonie (EE), Irlande (IE), Grèce (EL), Espagne (ES), France (FR), Croatie (HR), Italie (IT), Chypre (CY), Lettonie (LV), Lituanie (LT), Luxembourg (LU), Hongrie (HU), Malte (MT), Pays-Bas (NL), Autriche (AT), Pologne (PL), Portugal (PT), Roumanie (RO), Slovénie (SI), Slovaquie

(SK), Finlande (FI), Suède (SE), Royaume-Uni (UK), Turquie (TR), Norvège (NO), Suisse (CH), Islande (IS) et Liechtenstein (LI).

La fonctionnalité WLAN de cet appareil est limitée à un usage à l'intérieur lorsqu'elle fonctionne sur la plage de fréquences comprises entre 5150 et 5350 MHz.

German: Nach Artikel 10 (10) der Richtlinie 2014/53/EU zeigt die Verpackung, dass dieses Funkgerät bei der Bereitstellung in den folgenden Märkten einigen Einschränkungen unterliegt: Belgien (BE), Bulgarien (BG), Tschechische Republik (CZ), Dänemark (DK), Deutschland (DE), Estland (EE), Irland (IE), Griechenland (GR), Spanien (ES), Frankreich (FR), Kroatien (HR), Italien (IT), Zypern (CY), Lettland (LV), Litauen (LT), Luxemburg (LU), Ungarn (HU), Malta (MT), Niederlande (NL), Österreich (AT), Polen (PL), Portugal (PT), Rumänien (RO), Slowenien (SI), Slowakei (SK), Finnland (FI), Schweden (SE), Großbritannien (GB), Türkei (TR), Norwegen (NO), Schweiz (CH), Island (IS) und Liechtenstein (LI).

Die WLAN-Funktion dieses Gerätes ist auf den Einsatz in Innenräumen beschränkt, wenn es im Frequenzbereich 5150 bis 5350 MHz betrieben wird.

Greek: Σύμφωνα με το άρθρο 10 (10) της οδηγίας 2014/53/EU, η συσκευασία δείχνει ότι αυτός ο ραδιοφωνικός εξοπλισμός θα υπόκειται σε κάποιους περιορισμούς, όταν κυκλοφορήσει στην αγορά στο Βέλγιο (BE), τη Βουλγαρία (BG), τη Δημοκρατία της Τσεχίας (CZ), τη Δανία (DK), τη Γερμανία (DE), την Εσθονία (EE), την Ιρλανδία (IE), την Ελλάδα (EL), την Ισπανία (ES), τη Γαλλία (FR), την Κροατία (HR), την Ιταλία (IT), την Κύπρο (CY), τη Λετονία (LV), τη Λιθουανία (LT), το Λουξεμβούργο (LU), την Ουγγαρία (HU), τη Μάλτα (MT), την Ολλανδία (NL), την Αυστρία (AT), την Πολωνία (PL), την Πορτογαλία (PT), τη Ρουμανία (RO), τη Σλοβενία (SI), τη Σλοβακία (SK), τη Φινλανδία (FI), τη Σουηδία (SE), το Ηνωμένο Βασίλειο (UK), την Τουρκία (TR), τη Νορβηγία (NO), την Ελβετία (CH), την Ισλανδία (IS) και το Λίχτενστάιν (LI).

Η λειτουργία του ασύρματου τοπικού δικτύου (WLAN) για αυτήν τη συσκευή επιτρέπεται μόνο για χρήση σε εσωτερικούς χώρους όταν λειτουργεί στο εύρος συχνοτήτων 5150 έως 5350 MHz.

Hungarian: A 2014/53/EU irányelv 10. (10) cikkének megfelelően a csomagoláson fel van tüntetve, hogy a rádióberendezésre bizonyos korlátozások vonatkoznak a következő országokban való értékesítés esetén: Belgium (BE), Bulgária (BG), Cseh Köztársaság (CZ), Dánia (DK), Németország (DE), Észtország (EE), Írország (IE), Görögország (EL), Spanyolország (ES), Franciaország (FR), Horvátország (HR), Olaszország (IT), Ciprus (CY), Lettország (LV), Litvánia (LT), Luxemburg (LU), Magyarország (HU), Málta (MT), Hollandia (NL), Ausztria (AT), Lengyelország (PL), Portugália (PT), Románia (RO), Szlovénia (SI), Szlovákia (SK), Finnország (FI), Svédország (SE), Egyesült Királyság (UK), Törökország (TR), Norvégia (NO), Svájc (CH), Izland (IS) és Liechtenstein (LI).

A készülék WLAN-funkciója az 5150 és 5350 MHz közötti frekvenciatartományban történő működés esetén csak beltéren használható.

Icelandic: Samkvæmt grein 10 (10) í tilskipun 2014/53/EU sést á pakkningum að takmarkanir verða á fjarskiptabúnaðinum þegar hann verður markaðssettur í Belgíu (BE), Búlgaríu (BG), Tékklandi (CZ), Danmörku (DK), Þýskalandi (DE), Eistlandi (EE), Írlandi (IE), Grikklandi (EL), Spáni (ES), Frakklandi (FR), Króatíu (HR), Ítalíu (IT), Kýpru (CY), Lettlandi (LV), Líthænu (LT), Lúxemborg (LU), Ungverjalandi (HU), Málta (MT), Hollandi (NL), Austurríki (AT), Póllandi (PL), Portúgal (PT), Rúmeníu (RO), Slóveníu (SI), Slóvakíu (SK), Finnlandi (FI), Svíþjóð (SE), Bretlandi (UK), Tyrklandi (TR), Noregi (NO), Sviss (CH), Íslandi (IS) og Liechtenstein (LI).

WLAN aðgerðin fyrir tækið takmarkast við innanhúsnúttökun eingöngu þegar unnið er á tíðnibílinu 5150 til 5350 MHz.

Italian: Ai sensi dell'articolo 10 (10), della Direttiva 2014/53/EU, nella confezione è indicato che questo apparecchiatura radio sarà soggetta ad alcune restrizioni, quando sul mercato di Belgio (BE), Bulgaria (BG), Repubblica ceca (CZ), Danimarca (DK), Germania (DE), Estonia (EE), Irlanda (IE), Grecia (EL), Spagna (ES), Francia (FR), Croazia (HR), Italia (IT), Cipro (CY), Lettonia (LV), Lituania (LT), Lussemburgo (LU), Ungheria (HU), Malta (MT), Olanda (NL), Austria (AT), Polonia (PL), Portogallo (PT), Romania (RO), Slovenia (SI), Slovacchia (SK), Finlandia (FI), Svezia (SE), Regno Unito (UK), Turchia (TR), Norvegia (NO), Svizzera (CH), Islanda (IS), e Liechtenstein (LI).

La funzione WLAN di questo dispositivo è limitata solo all'uso in ambienti interni quando opera nell'intervallo di frequenza compreso tra 5150 e 5350 MHz.

Latvian: Saskaņā ar Direktīvas 2014/53/EU 10. sadaļu (10) uz iepakojuma norādīts, ka uz šo radio aprīkojumu attieksies atsevišķi ierobežojumi, ja tas tiks tirgots Beļģijā (BE), Bulgārijā (BG), Čehijas

Republikā (CZ), Dānijā (DK), Vācijā (DE), Igaunijā (EE), Īrijā (IE), Grieķijā (EL), Spānijā (ES), Francijā (FR), Horvātijā (HR), Itālijā (IT), Kiprā (CY), Latvijā (LV), Lietuvā (LT), Luksemburgā (LU), Ungārijā (HU), Maltā (MT), Nīderlandē (NL), Austrijā (AT), Polijā (PL), Portugālē (PT), Rumānijā (RO), Slovēnijā (SI), Slovākijā (SK), Somijā (FI), Zviedrijā (SE), Apvienotajā Karalistē (UK), Turcijā (TR), Norvēģijā (NO), Šveicē (CH), Islandē (IS) un Lihtenšteinā (LI).

Šīs ierīces WLAN funkciju drīkst lietot tikai iekšējās, ja tā darbojas frekvences diapazonā no 5150 līdz 5350 MHz.

Lithuanian: Pagal direktyvos 2014/53/EU 10 (10) straipsnį ant pakuotės nurodyta, kad šiai radijo įrangai galioja tam tikri apribojimai, jei parduodama Belgijos (BE), Bulgarijos (BG), Čekijos Respublikos (CZ), Danijos (DK), Vokietijos (DE), Estijos (EE), Airijos (IE), Graikijos (EL), Ispanijos (ES), Prancūzijos (FR), Kroatijos (HR), Italijos (IT), Kipro (CY), Latvijos (LV), Lietuvos (LT), Liuksemburgo (LU), Vengrijos (HU), Maltos (MT), Nyderlandų (NL), Austrijos (AT), Lenkijos (PL), Portugalijos (PT), Rumunijos (RO), Slovėnijos (SI), Slovakijos (SK), Suomijos (FI), Švedijos (SE), Jungtinių Karalystės (UK), Turkijos (TR), Norvegijos (NO), Šveicarijos (CH), Islandijos (IS) ir Lichtenšteino (LI) rinkose.

Šio įrenginio WLAN funkcija pritaikyta tik naudojimui patalpose, kai darbinio dažnio diapazonas siekia nuo 5150 iki 5350 MHz.

Macedonian: Според член 10 (10) на директивата 2014/53/EU, пакувањето покажува дека оваа радио опрема ќе подложи на некои ограничувања кога ќе биде достапна на пазарот во Белгија (BE), Бугарија (BG), Чешка Република (CZ), Данска (DK), Германија (DE), Естонија (EE), Ирска (IE), Грција (EL), Шпанија (ES), Франција (FR), Хрватска (HR), Италија (IT), Кипар (CY), Латвија (LV), Литванија (LT), Луксембург (LU), Унгарија (HU), Малта (MT), Холандија (NL), Австрија (AT), Полска (PL), Португалија (PT), Романија (RO), Словенија (SI), Словачка (SK), Финска (FI), Шведска (SE), Обединетото Кралство (UK), Турција (TR), Норвешка (NO), Швајцарија (CH), Island (IS) и Лихтенштајн (LI).

Функцијата WLAN за овој уред е ограничена на внатрешна употреба само кога работи во фреквенциски опсег од 5150 до 5350 MHz.

Montenegro: U skladu sa Članom 10 (10) Direktive 2014/53/EU, na pakovanju je prikazano da ova radio-oprema podliježe nekim ograničenjima prilikom puštanja u promet na tržištima u sljedećim državama: Belgija (BE), Bugarska (BG), Češka Republika (CZ), Danska (DK), Njemačka (DE), Estonija (EE), Irska (IE), Grčka (EL), Španija (ES), Francuska (FR), Hrvatska (HR), Italija (IT), Kipar (CY), Letonija (LV), Litvanija (LT), Luksemburg (LU), Mađarska (HU), Malta (MT), Holandija (NL), Austrija (AT), Poljska (PL), Portugalija (PT), Rumunija (RO), Slovenija (SI), Slovačka (SK), Finska (FI), Švedska (SE), Ujedinjeno Kraljevstvo (UK), Turska (TR), Norveška (NO), Švajcarska (CH), Island (IS) i Lihtenštajn (LI).

Funkcija WLAN ovog uređaja je ograničena samo na unutrašnju upotrebu kada radi u opsegu frekvencija od 5150 do 5350 MHz.

Norwegian: I henhold til artikkel 10 (10) i direktiv 2014/53/EU, viser emballasje at radioutstyret blir underlagt noen restriksjoner når den plasseres på markedet i Belgia (BE), Bulgaria (BG), Tsjekkia (CZ), Danmark (DK), Tyskland (DE), Estland (EE), Irland (IE), Hellas (EL), Spania (ES), Frankrike (FR), Kroatia (HR), Italia (IT), Kypros (CY), Latvia (LV), Litauen (LT), Luxembourg (LU), Ungarn (HU), Malta (MT), Nederland (NL), Østerrike (AT), Polen (PL), Portugal (PT), Romania (RO), Slovenia (SI), Slovakia (SK), Finland (FI), Sverige (SE), Storbritannia (UK), Tyrkia (TR), Norge (NO), Sveits (CH), Island (IS), og Liechtenstein (LI).

WLAN-funksjonen for denne enheten begrenses til innendørs bruk ved drift i 5150 til 5350 MHz-frekvensområdet.

Polish: Zgodnie z artykułem 10 (10) dyrektywy 2014/53/EU na opakowaniu znajduje się informacja, że ten sprzęt radiowy będzie podlegał pewnym ograniczeniom po wprowadzeniu na rynek w następujących krajach: Belgia (BE), Bułgaria (BG), Czechy (CZ), Dania (DK), Niemcy (DE), Estonia (EE), Irlandia (IE), Grecja (EL), Hiszpania (ES), Francja (FR), Chorwacja (HR), Włochy (IT), Cypr (CY), Łotwa (LV), Litwa (LT), Luksemburg (LU), Węgry (HU), Malta (MT), Holandia (NL), Austria (AT), Polska (PL), Portugalia (PT), Rumunia (RO), Słowenia (SI), Słowacja (SK), Finlandia (FI), Szwecja (SE), Wielka Brytania (UK), Turcja (TR), Norwegia (NO), Szwajcaria (CH), Islandia (IS) i Liechtenstein (LI).

Funkcija WLAN tego urządzenia jest ograniczona tylko do użytku we wnętrzach, jeżeli działa w zakresie częstotliwości od 5150 do 5350 MHz.

Portuguese (Eu): De acordo com o Artigo 10 (10) da Diretiva 2014/53/EU, a embalagem mostra que este equipamento rádio irá ser sujeito a algumas restrições quando colocado no mercado da Bélgica (BE), Bulgária (BG), República Checa (CZ), Dinamarca (DK), Alemanha (DE), Estónia (EE), Irlanda (IE), Grécia (EL), Espanha (ES), França (FR), Croácia (HR), Itália (IT), Chipre (CY), Letónia (LV), Lituânia (LT), Luxemburgo (LU), Hungria (HU), Malta (MT), Países Baixos (NL), Áustria (AT), Polónia (PL), Portugal (PT), România (RO), Eslovénia (SI), Eslováquia (SK), Finlândia (FI), Suécia (SE), Reino Unido (UK), Turquia (TR), Noruega (NO), Suíça (CH), Islândia (IS) e Liechtenstein (LI).

A funcionalidade Wi-Fi para este dispositivo está restrita para o uso interior apenas quando opera na gama de frequências entre 5150 e 5350 MHz.

Romanian: În conformitate cu Articolul 10 (10) al Directivei 2014/53/EU, ambalajul indică faptul că acest echipament radio va face obiectul unor restricții atunci când va fi pus pe piață în Belgia (BE), Bulgaria (BG), Republica Cehă (CZ), Danemarca (DK), Germania (DE), Estonia (EE), Irlanda (IE), Grecia (EL), Spania (ES), Franța (FR), Croația (HR), Italia (IT), Cipru (CY), Letonia (LV), Lituania (LT), Luxemburg (LU), Ungaria (HU), Malta (MT), Olanda (NL), Austria (AT), Polonia (PL), Portugalia (PT), România (RO), Slovenia (SI), Slovacia (SK), Finlanda (FI), Suedia (SE), Regatul Unit (UK), Turcia (TR), Norvegia (NO), Elveția (CH), Islanda (IS) și Liechtenstein (LI).

Funkcija WLAN pentru acest dispozitiv este restricționată la utilizare doar în interior atunci când funcționează în intervalul de frecvență între 5150 și 5350 MHz.

Serbian: Prema Članu 10 (10) Direktive 2014/53/EU, na pakovanju postoji napomena o tome da ova radio-oprema podleže nekim ograničenjima kada se plasira na tržište u Belgiji (BE), Bugarskoj (BG), Češkoj Republici (CZ), Danskoj (DK), Nemačkoj (DE), Estoniji (EE), Irskoj (IE), Grčkoj (EL), Španiji (ES), Francuskoj (FR), Hrvatskoj (HR), Italiji (IT), na Kipru (CY), u Letoniji (LV), Litvaniji (LT), Luksemburgu (LU), Mađarskoj (HU), na Malti (MT), u Holandiji (NL), Austriji (AT), Poljskoj (PL), Portugaliji (PT), Rumuniji (RO), Sloveniji (SI), Slovačkoj (SK), Finskoj (FI), Švedskoj (SE), Ujedinjenom Kraljevstvu (UK), Turskoj (TR), Norveškoj (NO), Švajcarskoj (CH), na Islandu (IS) i u Lihtenštajnu (LI).

Korišćenje WLAN funkcije ovog uređaja, pri radu u frekventnom opsegu od 5150 do 5350 MHz ograničeno je na zatvoreni prostor.

Slovak: Podľa článku 10 (10) smernice 2014/53/EU, balenie tohto zariadenia uvádza že jeho vysielacie časti budú čiastočne obmedzené pri použití v Belgicku (BE), Bulharsku (BG), Česku (CZ), Dánsku (DK), Nemecku (DE), Estónsku (EE), Írsku (IE), Grécku (EL), Španielsku (ES), Francúzsku (FR), Chorvátsku (HR), Taliansku (IT), Cypre (CY), Lotyšsku (LV), Litve (LT), Luxembursku (LU), Maďarsku (HU), Malte (MT), Holandsku (NL), Rakúsku (AT), Poľsku (PL), Portugalsku (PT), Rumunsku (RO), Slovensku (SI), Slovensku (SK), Fínsku (FI), Švédsku (SE), Veľkej Británii (UK), Turecku (TR), Nórsku (NO), Švajčiarsku (CH), Islande (IS) a Lichtenštajnsku (LI).

Používanie funkcie WLAN vo frekvenčnom pásme 5150 až 5350 MHz na tomto zariadení je obmedzené len na interiér.

Slovenian: V skladu s 10. členom (10) Direktive 2014/53/EU je na embalaži prikazano, da za to radijsko opremo veljajo nekatere omejitve, kadar se prodaja na tržiščih Belgije (BE), Bolgarije (BG), Češke (CZ), Danske (DK), Nemčije (DE), Estonije (EE), Irske (IE), Grčije (EL), Španije (ES), Francije (FR), Hrvaške (HR), Italije (IT), Cipra (CY), Latvije (LV), Litve (LT), Luksemburga (LU), Mađarske (HU), Malte (MT), Nizozemske (NL), Avstrije (AT), Poljske (PL), Portugalske (PT), Romunije (RO), Slovenije (SI), Slovaške (SK), Finske (FI), Švedske (SE), Združenega kraljevstva (UK), Turčije (TR), Norveške (NO), Švice (CH), Islandije (IS) in Lihtenštajna (LI).

Funkcija WLAN te naprave je na uporabo v notranjih prostorih omejena samo med delovanjem v frekvenčnem razponu od 5150 do 5350 MHz.

Spanish: Según el artículo 10 (10) de la Directiva 2014/53/EU, la caja muestra que este equipo de radio estará sujeto a algunas restricciones cuando se lance al mercado en Bélgica (BE), Bulgaria (BG), República Checa (CZ), Dinamarca (DK), Alemania (DE), Estonia (EE), Irlanda (IE), Grecia (EL), España (ES), Francia (FR), Croacia (HR), Italia (IT), Chipre (CY), Letonia (LV), Lituania (LT), Luxemburgo (LU), Hungría (HU), Malta (MT), Países Bajos (NL), Austria (AT), Polonia (PL), Portugal (PT), Rumanía (RO), Eslovenia (SI), Eslovaquia (SK), Finlandia (FI), Suecia (SE), Reino Unido (UK), Turquía (TR), Noruega (NO), Suiza (CH), Islandia (IS) y Liechtenstein (LI).

La función WLAN de este dispositivo se restringe a su uso exclusivo en interiores en el rango de frecuencias de 5150 a 5350 MHz.

Swedish: I enlighet med artikel 10 (10) i direktiv 2014/53/EU, visar förpackningen att denna radioutrustning kommer att bli föremål för vissa begränsningar när de släpps ut på marknaden i Belgien (BE), Bulgarien (BG), Tjeckien (CZ), Danmark (DK), Tyskland (DE), Estland (EE), Irland (IE), Grekland (EL), Spanien (ES), Frankrike (FR), Kroatien (HR), Italien (IT), Cypern (CY), Lettland (LV), Litauen (LT), Luxemburg (LU), Ungern (HU), Malta (MT), Nederländerna (NL), Österrike (AT), Polen (PL), Portugal (PT), Rumänien (RO), Slovenien (SI), Slovakien (SK), Finland (FI), Sverige (SE), Storbritannien (UK), Turkiet (TR), Norge (NO), Schweiz (CH), Island (IS), och Liechtenstein (LI). Enhetens WLAN-funktion är begränsad till inomhusbruk när den används i frekvensområdet 5150 till 5350 MHz.

Türkisch: 2014/53/EU Yönetmeliği Madde 10'a (10) göre bu telsiz ekipmanın ambalajında Belçika (BE), Bulgaristan (BG), Çek Cumhuriyeti (CZ), Danimarka (DK), Almanya (DE), Estonya (EE), İrlanda (IE), Yunanistan (EL), İspanya (ES), Fransa (FR), Hırvatistan (HR), İtalya (IT), Kıbrıs (CY), Letonya (LV), Litvanya (LT), Lüksemburg (LU), Macaristan (HU), Malta (MT), Hollanda (NL), Avusturya (AT), Polonya (PL), Portekiz (PT), Romanya (RO), Slovenya (SI), Slovakya (SK), Finlandiya (FI), İsviçre (SE), İngiltere (UK), Türkiye (TR), Norveç (NO), İsviçre (CH), İzlanda (IS) ve Liechtenstein (LI) pazarında bazı kısıtlamalara tabi olacağı gösterilmektedir.

Bu cihazın WLAN özelliği 5150 ila 5350 MHz frekans aralığında çalışırken sadece kapalı mekânda kullanımla sınırlanmıştır.

ErP Product Information

Hereby, Huawei Technologies Co., Ltd. declares that the product meets the directive 2009/125/EC and its implementation regulation (EC) NO 1275/2008 amended by (EC) 278/2009,(EC) 642/2009,(EU) 617/2013,(EU) 801/2013,and its implementation regulation (EC) NO 278/2009.

If all wired network ports are connected and all wireless network ports are activated, the **networked standby power consumption** of the product is less than 20.0 W.

For the product information displayed on the manufacturers' freely accessible websites required by (EU) No 801/2013, please visit www.huawei.com/en/product-certification.

The **WLAN** indicator indicates the status of the wireless network function. To enable or disable the wireless network function:

- Press the **WLAN** button on the side panel of the product. (Ignore this method if the product has no such a button or this button is invalid.)
- Log in to the web page, choose **Advanced Configuration > WLAN > 2.4G Basic Network Settings** or **5G Basic Network Settings > Enable WLAN**. (Different products may have different configuration pages.)

Frequency Bands and Power

(a) Frequency bands in which the radio equipment operates: Some bands may not be available in all countries or all areas. Please contact the local carrier for more details.

(b) Maximum radio-frequency power transmitted in the frequency bands in which the radio equipment operates: The maximum power for all bands is less than the highest limit value specified in the related Harmonized Standard.

The frequency bands and transmitting power (radiated and/or conducted) nominal limits applicable to this radio equipment are as follows:

- Wi-Fi 2.4 GHz: 18±2 dBm
- Wi-Fi 5 GHz: 5150–5350 MHz, 21±2 dBm; 5470–5725 MHz, 26±2 dBm

Accessories and software information


It is recommended that the following accessories should be used: adapter, Ethernet cable, DSL cable, telephone cable, splitter, filter, transfer connector, connector, connection box, and USB cable.

(Different product packages may deliver different accessory lists. The actual delivered accessory list prevails.)

The product software version is V100RXYZ. (X, Y, and Z indicate numbers 0–9. They may be different for different products. Actual values prevail.)

Software updates will be released by the manufacturer to fix bugs or enhance functions after the product has been released. All software versions released by the manufacturer have been verified and are still compliant with the related rules.

For more information about the software, see web pages of products.

 The above information (EU regulatory conformance) is for only EU member states.

Frequency range, maximum output power and regulatory domain cannot be changed by the user.

Copyright © Huawei Technologies Co., Ltd. 2019. All rights reserved.

No part of this manual may be reproduced or transmitted in any form or by any means without prior written consent of Huawei Technologies Co., Ltd. and its affiliates ("Huawei").

The product described in this manual may include copyrighted software of Huawei and possible licensors. Customers shall not in any manner reproduce, distribute, modify, decompile, disassemble, decrypt, extract, reverse engineer, lease, assign, or sublicense the said software, unless such restrictions are prohibited by applicable laws or such actions are approved by respective copyright holders.

Trademarks and Permissions



HUAWEI, HUAWEI, and



are trademarks or registered trademarks of Huawei Technologies Co., Ltd.

Wi-Fi®, the Wi-Fi CERTIFIED logo, and the Wi-Fi logo are trademarks of Wi-Fi Alliance.

Other trademarks, product, service and company names mentioned may be the property of their respective owners.

Notice

Some features of the product and its accessories described herein rely on the software installed, capacities and settings of local network, and therefore may not be activated or may be limited by local network operators or network service providers.

Thus, the descriptions herein may not exactly match the product or its accessories which you purchase.

Huawei reserves the right to change or modify any information or specifications contained in this manual without prior notice and without any liability.

DISCLAIMER

ALL CONTENTS OF THIS MANUAL ARE PROVIDED "AS IS". EXCEPT AS REQUIRED BY APPLICABLE LAWS, NO WARRANTIES OF ANY KIND, EITHER EXPRESS OR IMPLIED, INCLUDING BUT NOT LIMITED TO, THE IMPLIED WARRANTIES OF MERCHANTABILITY AND FITNESS FOR A PARTICULAR PURPOSE, ARE MADE IN RELATION TO THE ACCURACY, RELIABILITY OR CONTENTS OF THIS MANUAL.

TO THE MAXIMUM EXTENT PERMITTED BY APPLICABLE LAW, IN NO EVENT SHALL HUAWEI BE LIABLE FOR ANY SPECIAL, INCIDENTAL, INDIRECT, OR CONSEQUENTIAL DAMAGES, OR LOSS OF PROFITS, BUSINESS, REVENUE, DATA, GOODWILL SAVINGS OR ANTICIPATED SAVINGS REGARDLESS OF WHETHER SUCH LOSSES ARE FORSEEABLE OR NOT.

THE MAXIMUM LIABILITY (THIS LIMITATION SHALL NOT APPLY TO LIABILITY FOR PERSONAL INJURY TO THE EXTENT APPLICABLE LAW PROHIBITS SUCH A LIMITATION) OF HUAWEI ARISING FROM THE USE OF THE PRODUCT DESCRIBED IN THIS MANUAL SHALL BE LIMITED TO THE AMOUNT PAID BY CUSTOMERS FOR THE PURCHASE OF THIS PRODUCT.

Import and Export Regulations

Customers shall comply with all applicable export or import laws and regulations and be responsible to obtain all necessary governmental permits and licenses in order to export, re-export or import the product mentioned in this manual including the software and technical data therein.